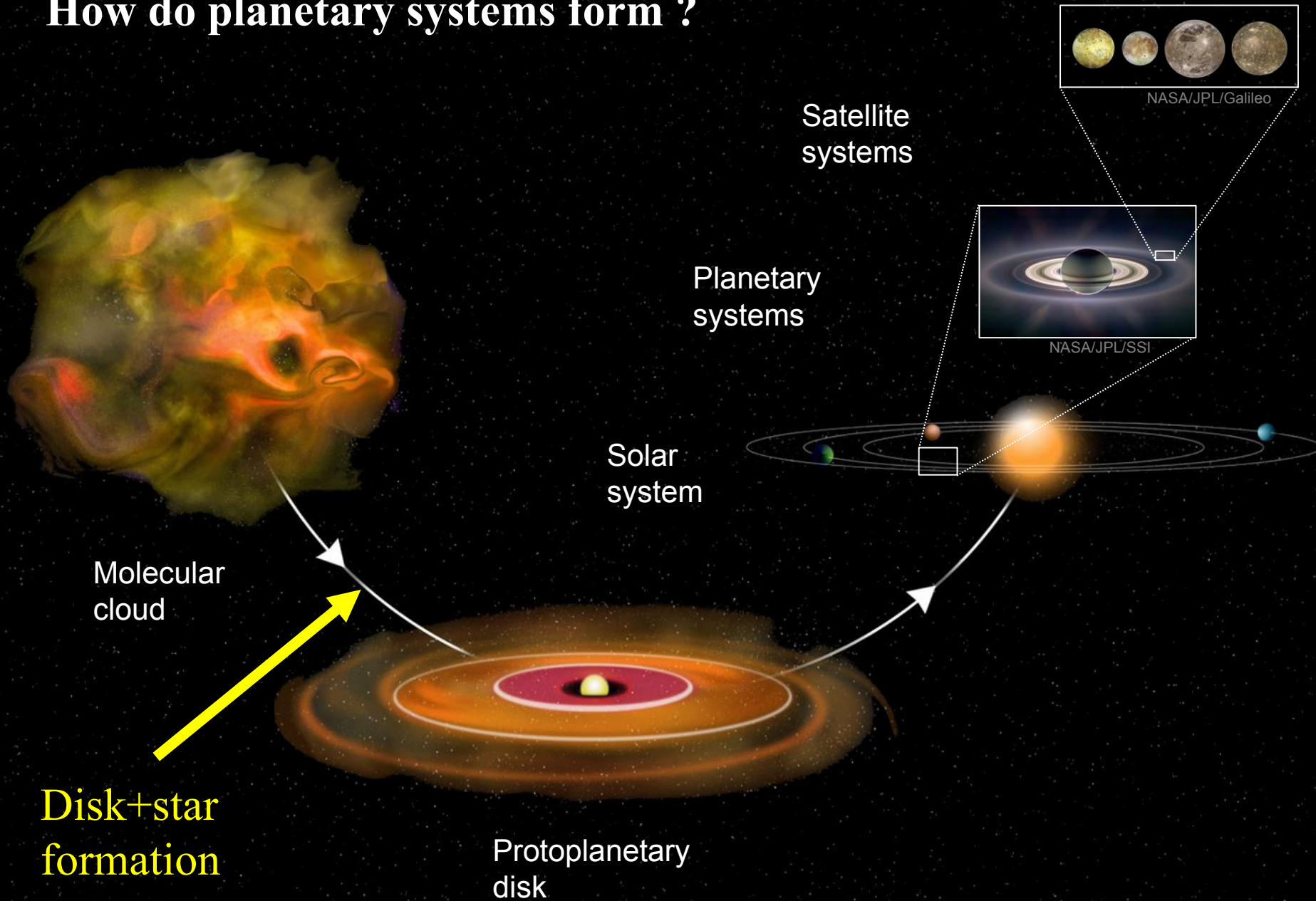


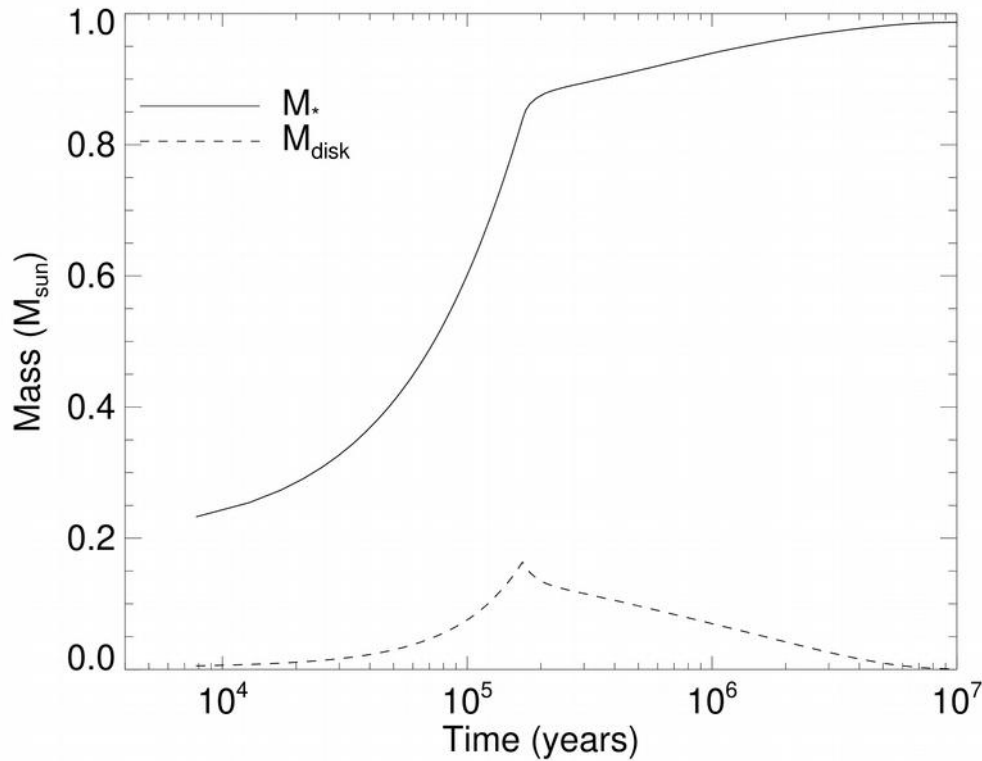
Joint Growth of young star and protoplanetary disk

Kévin BAILLIÉ (Institut de Mécanique Céleste de Calcul des Éphémérides)

How do planetary systems form ?



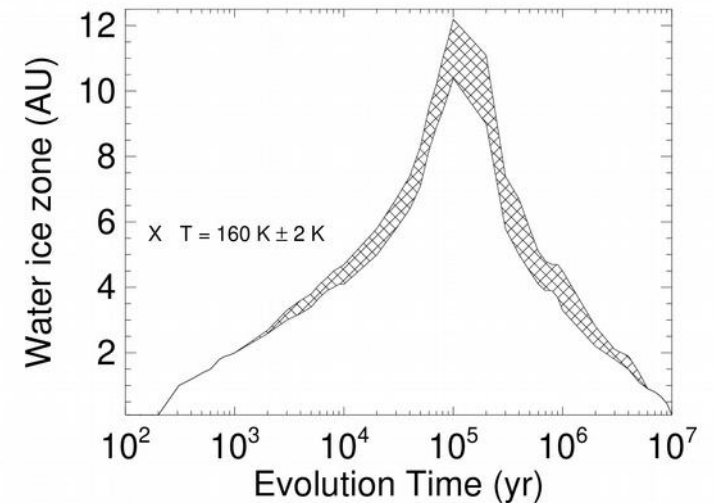
Building the {star + disk} system



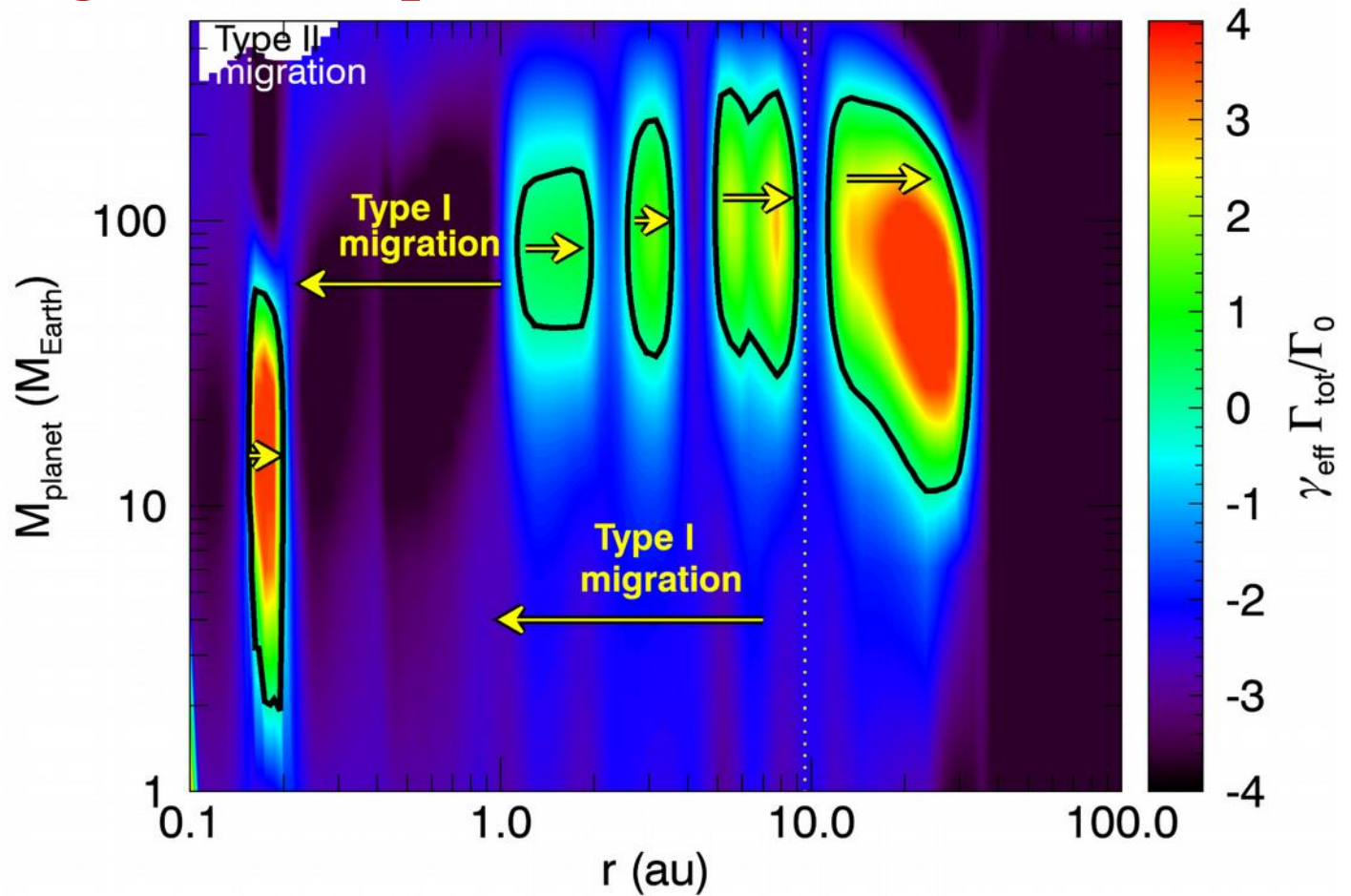
Formation by collapse
in 170 kyr

Modeling disk formation
and viscous evolution using
the hydrocode PHYVE
(Baillié et al., 2014-2018)

Snowline evolution



Planet migration maps



Results :

- Planet traps at the snowlines
- Hot Jupiters
- Super-Earths